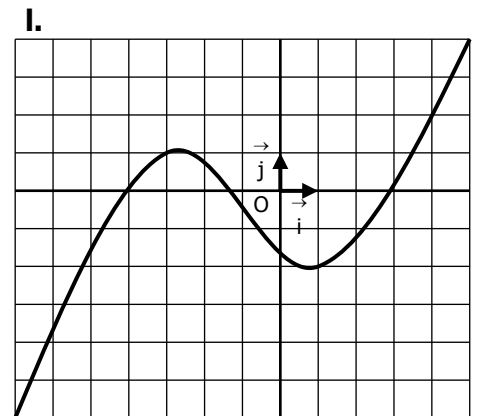
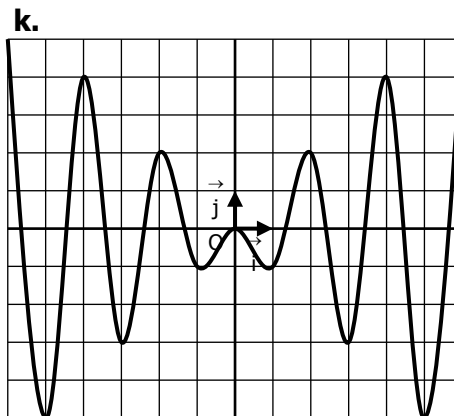
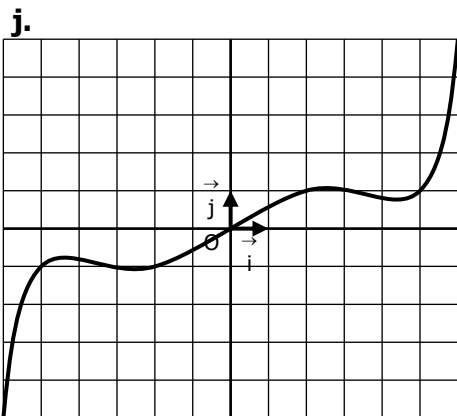
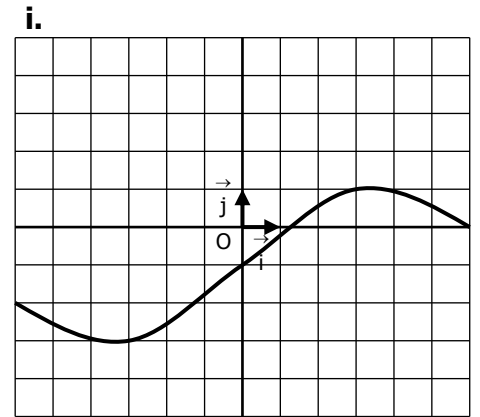
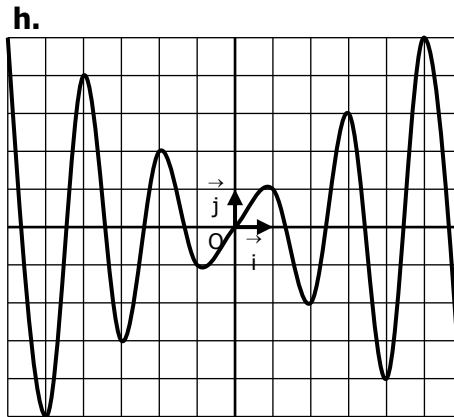
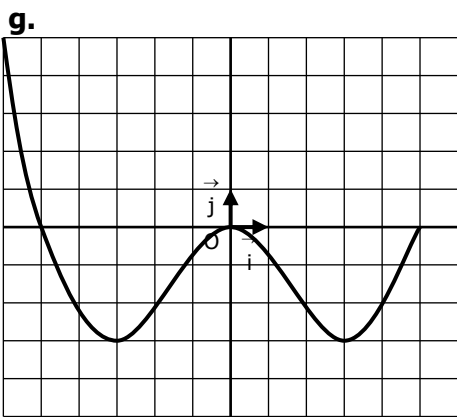
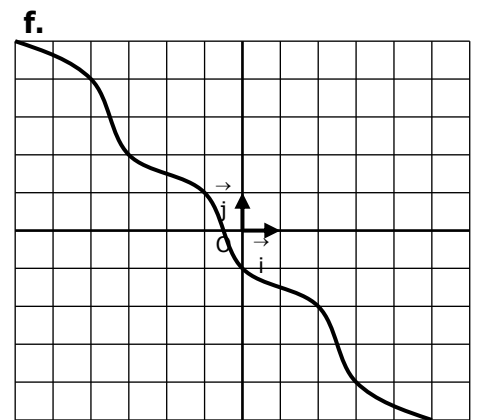
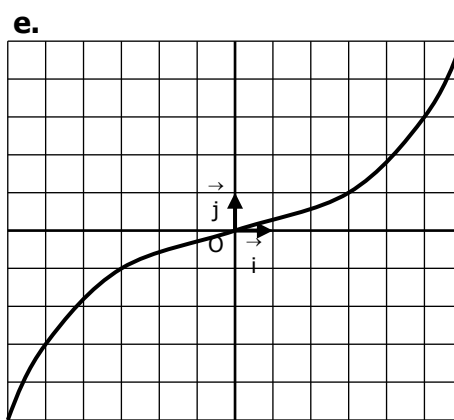
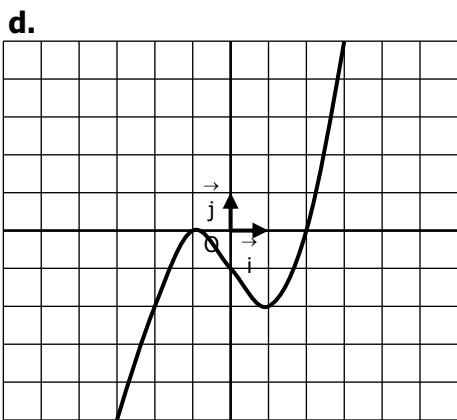
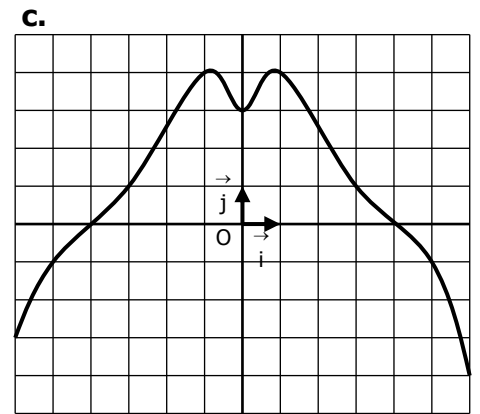
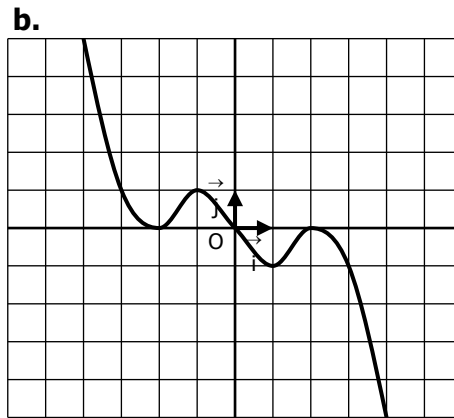
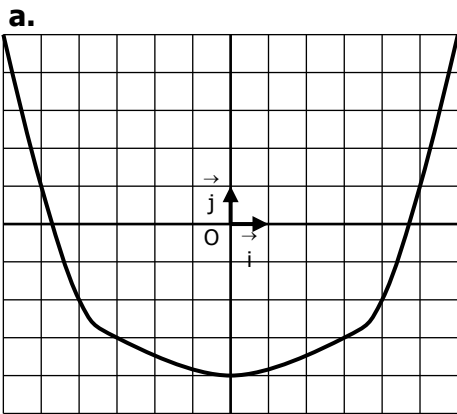
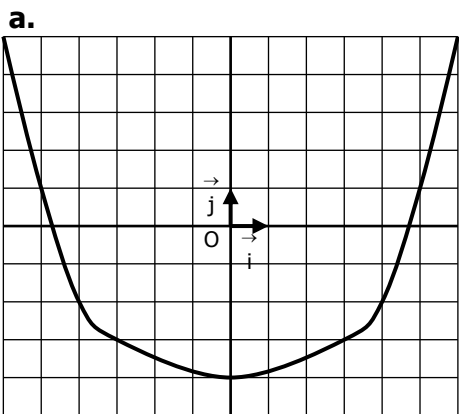


Parmi les fonctions suivantes, retrouver celles qui sont **paires**, celles qui sont **impaires**, et celles qui ne sont **ni paires ni impaires** :

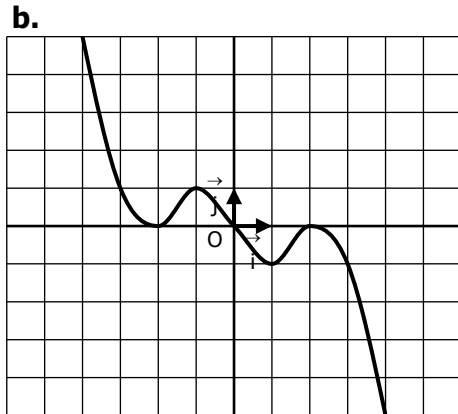


**CORRIGE – NOTRE DAME DE LA MERCI - MONTPELLIER**

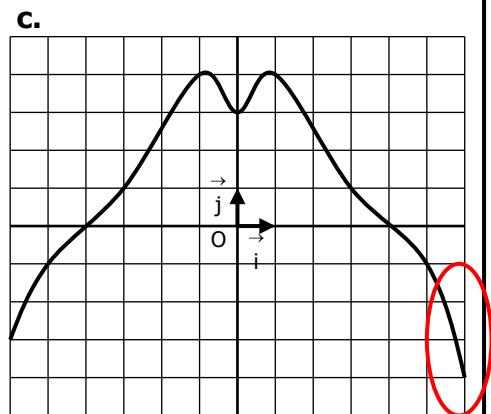
Retrouver celles qui sont **paire**s, celles qui sont **impaire**s, et celles qui ne sont **ni paire ni impaire**s :



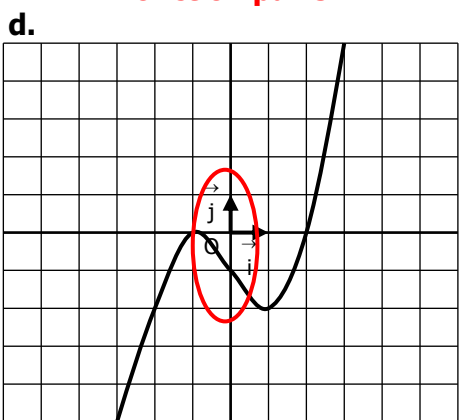
**Fonction paire**



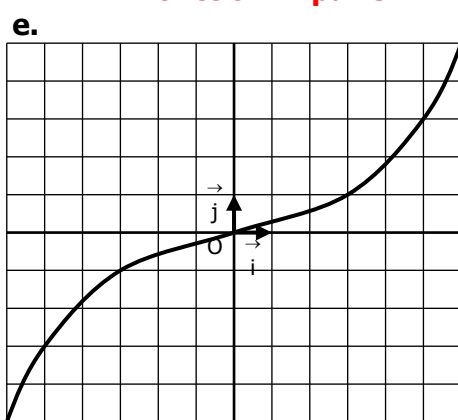
**Fonction impaire**



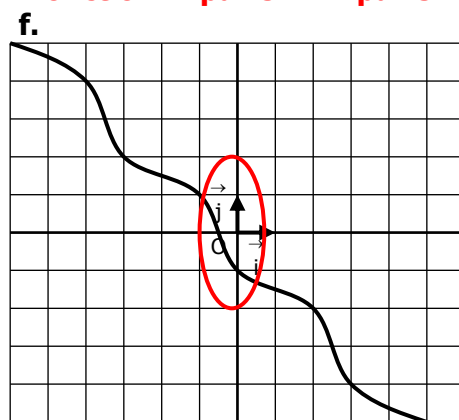
**Fonction ni paire ni impaire**



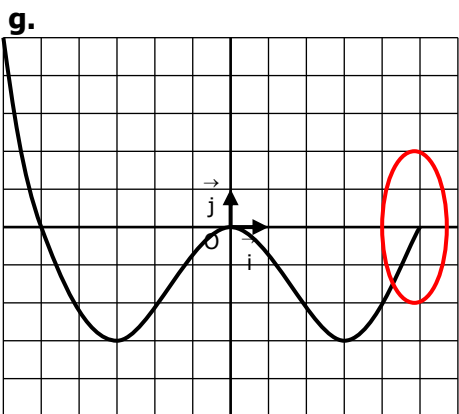
**Fonction ni paire ni impaire**



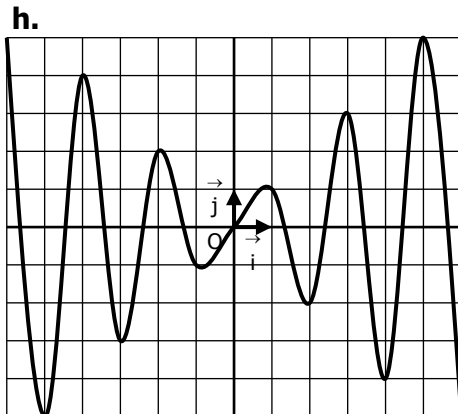
**Fonction impaire**



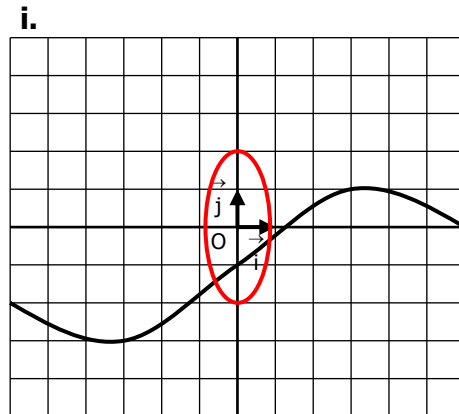
**Fonction ni paire ni impaire**



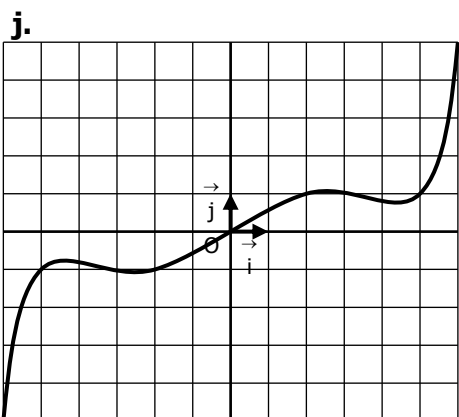
**Fonction ni paire ni impaire**



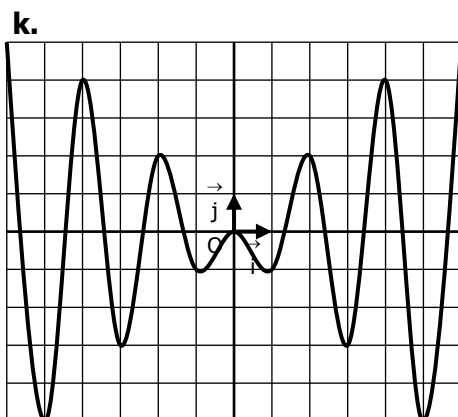
**Fonction impaire**



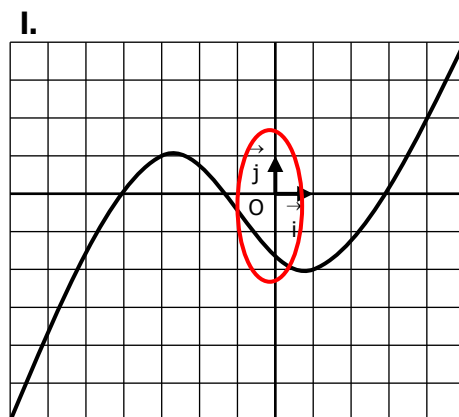
**Fonction ni paire ni impaire**



**Fonction impaire**



**Fonction paire**



**Fonction ni paire ni impaire**